

SDS - Polyacrylamide Gel Electrophoresis with ALTER CHEM

Mix

Acrylamide/Bis Solution	(*)
SDS Solution	(S00002)
Tris Resolving Gel Buffer	(T00005)
Gel Polymerization <i>Optimum</i> Kit	(G00001)

Cast your separating gel - Allow the solution to polymerize

Mix

Acrylamide/Bis Solution	(*)
SDS Solution	(S00002)
Tris Stacking Gel Buffer	(T00006)
Gel Polymerization <i>Optimum</i> Kit	(G00001)

Cast your stacking gel - Allow the solution to polymerize

Prepare your samples

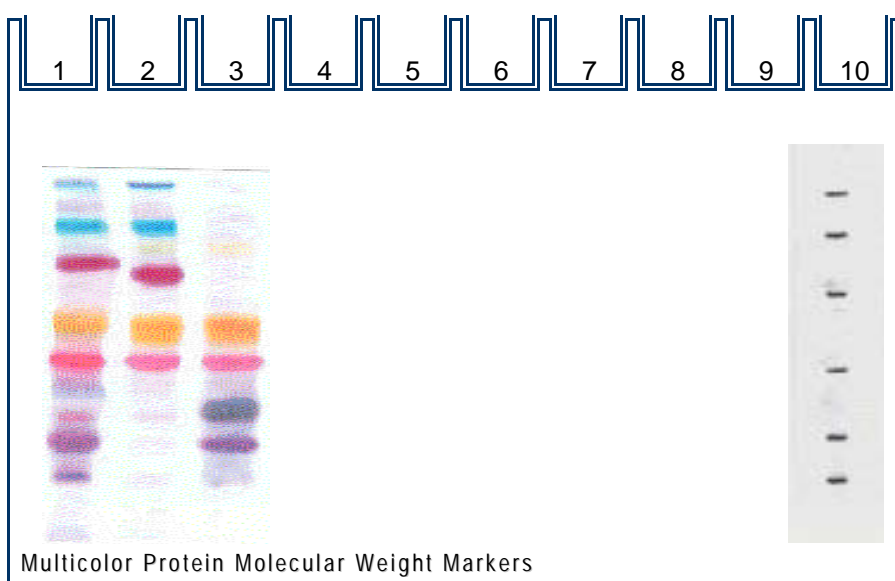
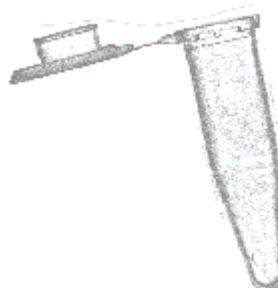
Mix with SDS - Sample Buffer (S00001)

Load samples and markers

Add Running Buffer (T00002)

Run Electrophoresis

You may use the available protocols to prepare your SDS-PAGE gels.

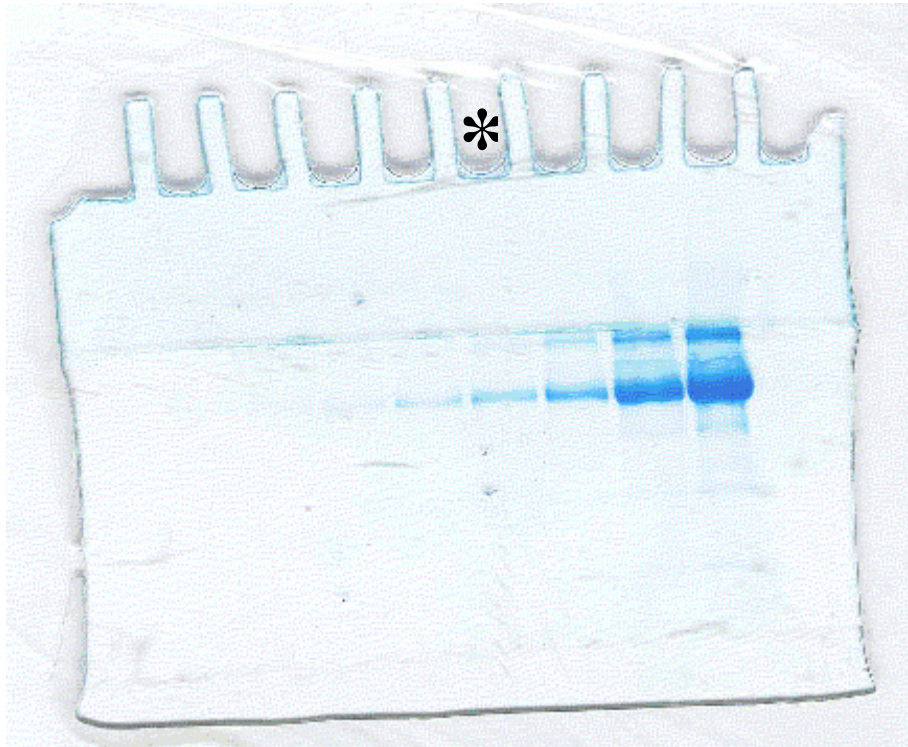


Lane :
1 Wide range
2 High range
3 Low range
10 biotinylated molecular weight marker

Multicolor Protein Molecular Weight Markers are useful to confirm the quality of the electrophoretic run, the transfer efficiency and to follow antigen location.

Biotinylated Protein Molecular Weight Markers are useful to determine the molecular weight of the antigens right on the blot.

Stain total proteins with **Colloidal Blue Stain (C00001)**



The **Colloidal Blue Stain** visualizes 15 ng of albumin.
This amount of BSA was loaded in the well indicated with asterisk (*)

Place the wet gels on **Image Analysis System (inquire)**

Aquire image - Quantitate